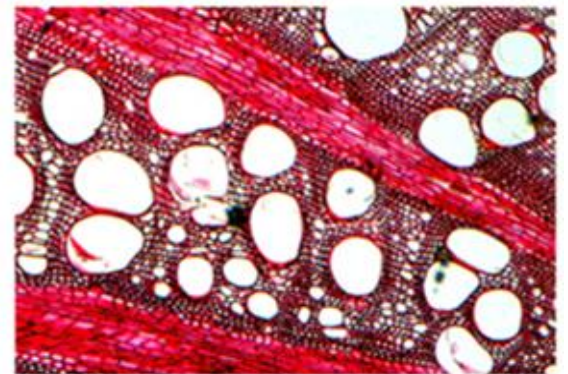
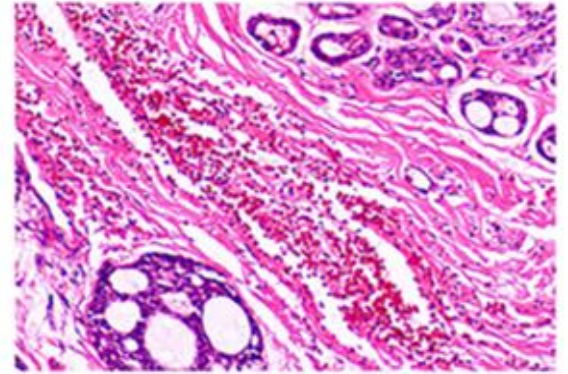


## BINOCULAR MICROSCOPE





## 01 HEAD

Binocular head, 30° inclined, 360° rotatable, interpupillary 54-75mm, left eyepiece tube diopter adjustable.

## 02 NOSEPIECE

Outward quadruple nosepiece, ball bearing inner locating, equipped with achromatic 4x, 10x, 40x(s), 100x(s, oil).



## 03 WORKING STAGE

Double layer mechanical stage 110x125mm, moving range 18x65mm.



## 04 CONDENSER

Abbe condenser N.A. 1.25, iris diaphragm, with filter holder.



## 05 ILLUMINATION

Brightness adjustable bottom LED light with adjustment knob.



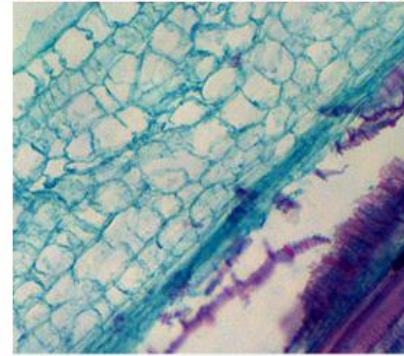
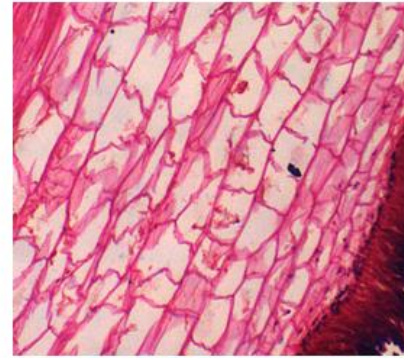
## 06 POWER SUPPLY

Power cord detachable, power range 110/220V.



### PRODUCT APPLICATION

Student microscope is designed for tertiary institutions and primary and secondary schools, which convenient to observe biological slices, biological cells, bacteria and living tissue culture, fluid precipitation observation and research. It is widely used in teaching demonstration, biochemical experiments, clinical research etc.



## BINOCULAR MICROSCOPE

# TECHNICAL SPECIFICATIONS

<b>Model No.</b>	<b>SLV-20A</b>
<b>Optical System:</b>	Finity Optical System
<b>Viewing Head:</b>	Binocular Head, 30° Inclined, 360° Rotatable
<b>Eyepiece:</b>	Wide Field WF 10X/18MM with diopter adjustment.
<b>Nosepiece:</b>	Quadruple Nosepiece, Ball Bearing Inner Locating
<b>Objectives:</b>	Achromatic Objective 4X,10X,40X(SL),100X(oil)
<b>Specimen stage:</b>	Double layer Mechanical Stage 110mm X 120mm. / 60mm X 30mm.
<b>Focusing:</b>	Coaxial Coarse & Fine Focus Knob, Coarse Focusing Range 20mm
<b>Condenser:</b>	Abbe Condenser N.A.1.25, With Iris Diaphragm Filter
<b>Illumination:</b>	Built-in Illumination LED Brightness Adjustable
<b>Filter</b>	Blue