

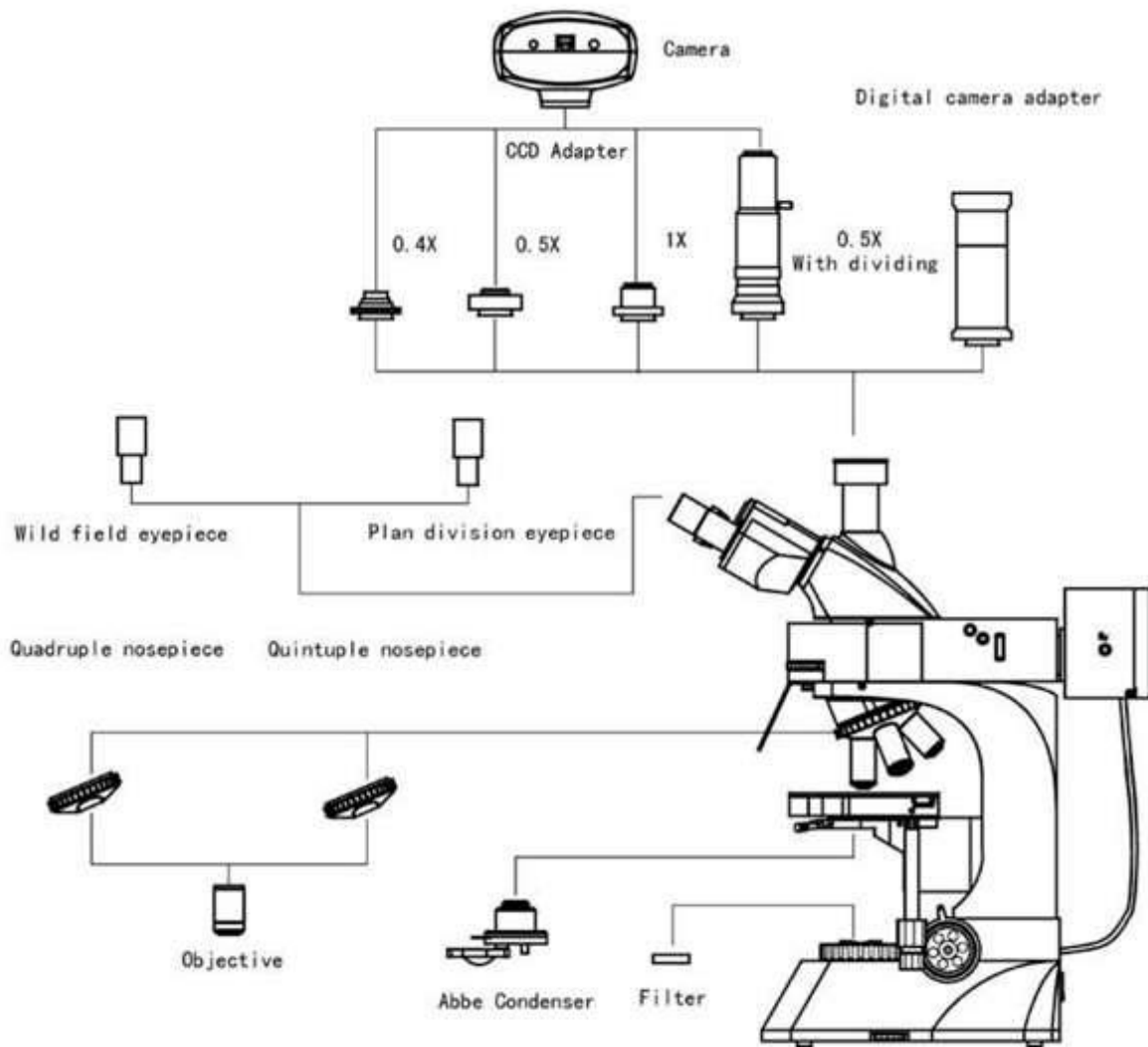
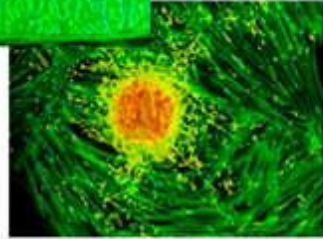
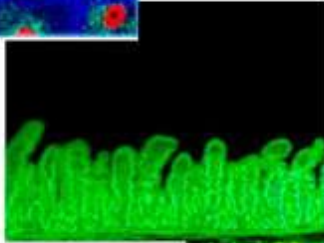
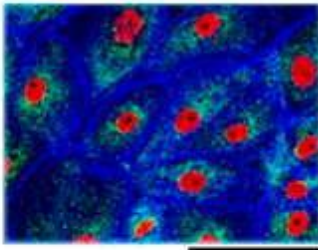
BIOLOGICAL TRINOCULAR LED FLOURESCENT MICROSCOPE



LED Flourescent Microscope, B,G,UV,U

- Trinocular, Inclination 30°, Rotatable 360°
- Double Layer Mechanical Stage, Size 210x140mm, Moving Range 75x50mm
- 5W High Brightness LED
- Transmit 3W High Brightness White LED, Brightness Adjustable
- Collector For Illumination With LED Lamp (With Filed Diaphragm)

Product Details



TRINOCULAR MICROSCOPES TECHNICAL SPECIFICATIONS

Model No.	SLV-FLU-L1
Optical System:	Infinity Optical System
Viewing Head:	Trinocular, Inclination 30°, Rotatable 360°, Interpupillary 53~75mm, Left Side Eyepiece Tube Diopter Adjustable $\pm 5^\circ$, Switch E100:P0/E0:P100
Eyepiece:	Extra Wide Field Eyepiece EWF 10X/22MM with diopter adjustment.
Nosepiece:	Quintuple(Backward ball bearing inner locating)
Objectives:	Infinity Plan Achromatic Objective <ul style="list-style-type: none"> • PL4X/0.10 WD19.8mm • PL10X/0.25 WD5.00mm • PLFL40X/0.85 WD:0.42 mm(No magnification spherochromatic aberration) • PL100X/1.25 WD0.36mm
Specimen stage:	Double Layer Mechanical Stage, Size 210x140mm, Moving Range 75x50mm
Focusing :	Coaxial Coarse & fine Focus System, With Tensional Adjustable And Up Stop, Fine Focusing Minimum Division 2um
Condenser:	Abbe Condenser N.A.=1.25, Rack & Pinion Up/Down Adjustable
Epi-Fluorescent Illumination:	5W High Brightness LED. Enable Selecting Monochromatic or Bichromatic LED for Light Source, Every Monochromatic LED Wave Band <ul style="list-style-type: none"> • Blue(410nm~490nm) • Green (475nm~550nm) • UV (320nm~415nm) Optional • V (380nm~415nm) Optional
Transmit Illumination:	<ul style="list-style-type: none"> • 3W High Brightness White LED, Brightness Adjustable • Blue Filter And Ground Glass • Collector For Illumination With LED Lamp (With Filed Diaphragm)
Adapter:	OPTIONAL: <ul style="list-style-type: none"> • 0.5x C-Mount • C-Mount 1.0x • 0.5x C-Mount With Dividing 0.1mm/Div • Adapter For CANON EF Digital SLR Camera
Accessories:	OPTIONAL: <ul style="list-style-type: none"> • Camera Attachment • Phase Contrast Attachment • Dark Field Attachment • Fluorescent Illumination • Pointer Attachment

